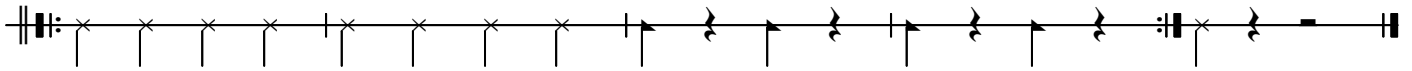


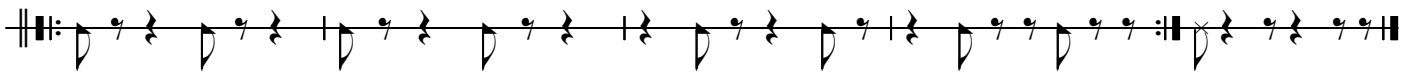
Cymbal Splits

arr. Josh Gottry

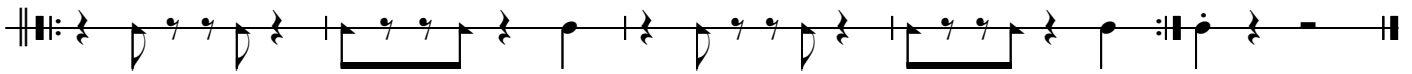
Unison A - Eights



Unison B - Bucks



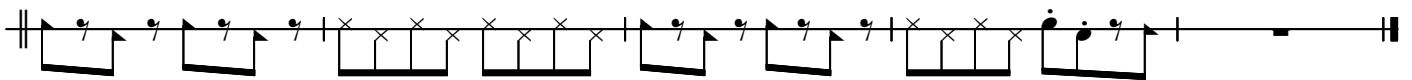
Unison C



Samba Accent



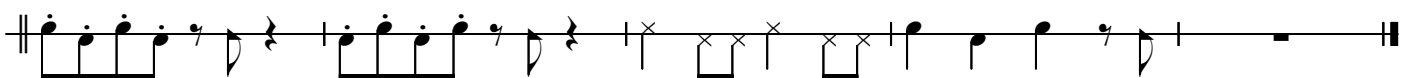
Split A



Split B



Split C



Cymbal parts are designated with the following note heads:



fusion crash

(sizzle crash that closes into a "chick" on the next rest)



high-hat "chick"



traditional crash

(if marked staccato, play short)